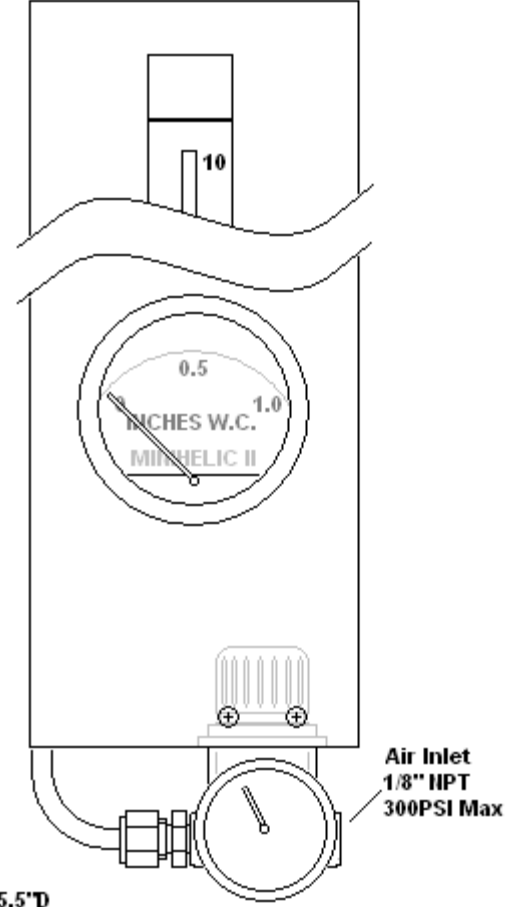
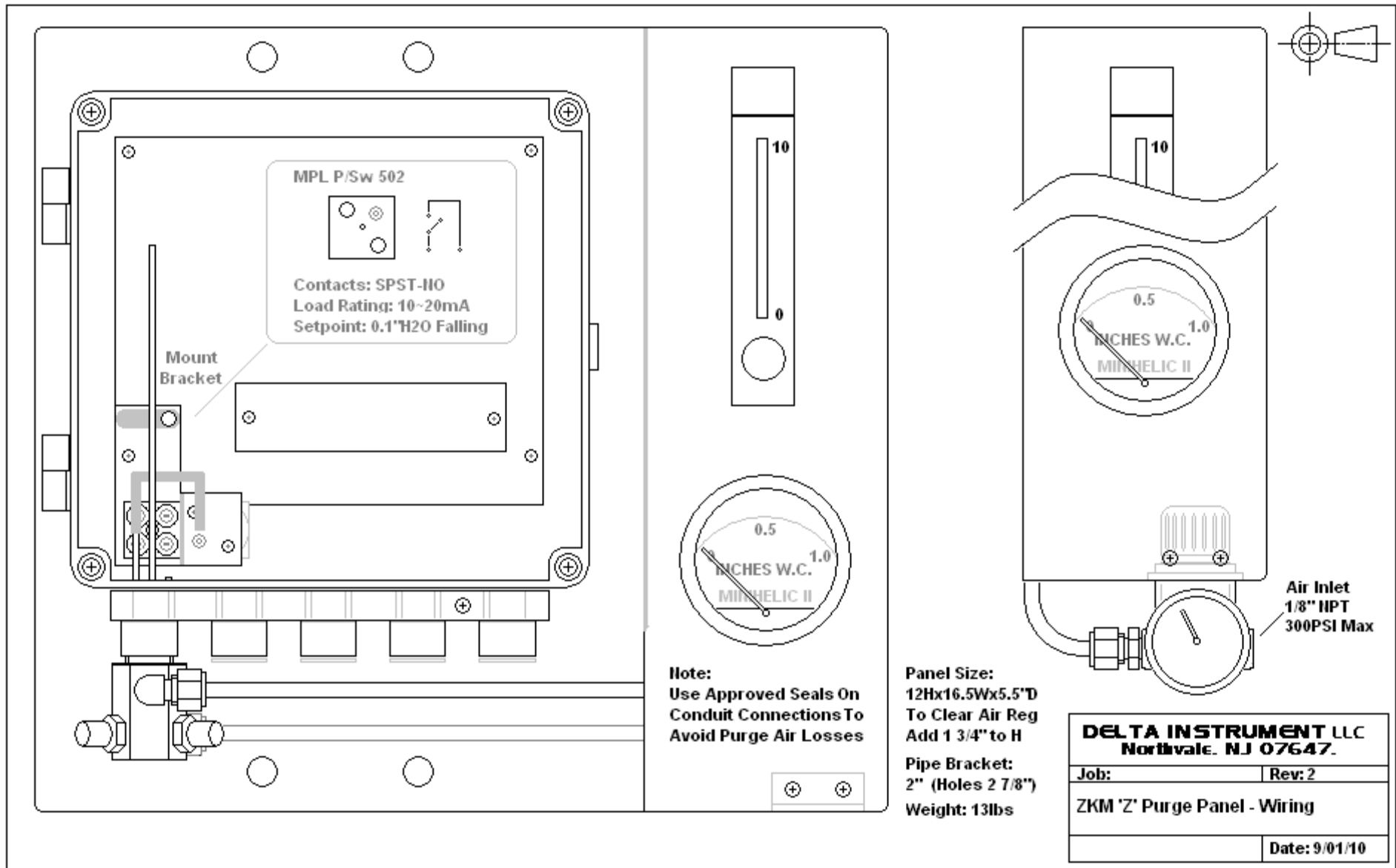


**Note:**  
Use Approved Seals On  
Conduit Connections To  
Avoid Purge Air Losses

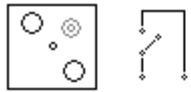
**Panel Size:**  
12Hx16.5Wx5.5"D  
To Clear Air Reg  
Add 1 3/4" to H  
**Pipe Bracket:**  
2" (Holes 2 7/8")  
**Weight:** 13lbs



<b>DELTA INSTRUMENT LLC</b> Northvale, NJ 07647.	
<b>Job:</b>	<b>Rev: 0</b>
ZKM 'Z' Purge Panel Complete	
<b>Date:</b> 9/01/10	



MPL P/Sw 502



Contacts: SPST-NO  
Load Rating: 10-20mA  
Setpoint: 0.1"H2O Falling

Mount Bracket

**Note:**  
Use Approved Seals On  
Conduit Connections To  
Avoid Purge Air Losses

**Panel Size:**  
12x16.5Wx5.5"D  
To Clear Air Reg  
Add 1 3/4" to H  
**Pipe Bracket:**  
2" (Holes 2 7/8")  
**Weight:** 13lbs

**Air Inlet**  
1/8" NPT  
300PSI Max

<b>DELTA INSTRUMENT LLC</b> Northvale, NJ 07647.	
<b>Job:</b>	<b>Rev:</b> 2
ZKM 'Z' Purge Panel - Wiring	
<b>Date:</b> 9/01/10	