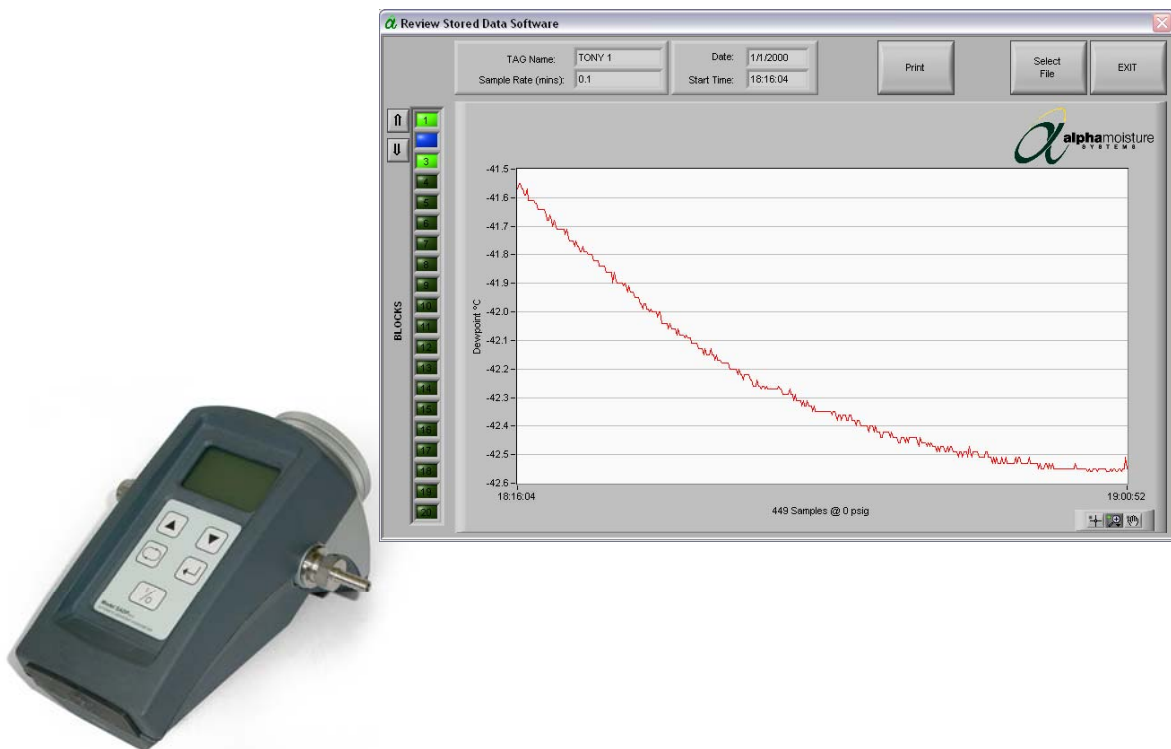


Model SADPmini Logger Software Version 2.8



Instruction Manual

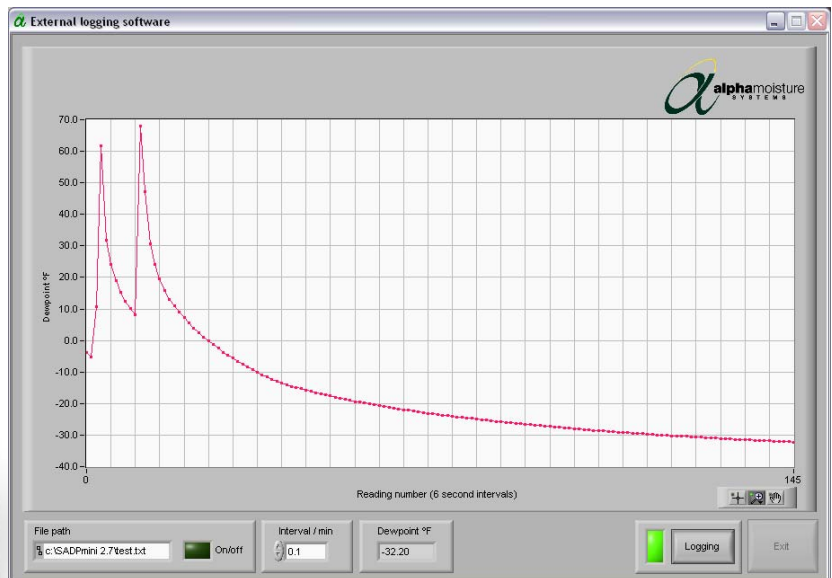
Alpha Moisture Systems
Alpha House
96 City Road
Bradford
BD8 8ES
England

Tel: +44 1274 733100
Fax: +44 1274 733200
Email: mail@amsystems.co.uk
Web: www.amsystems.co.uk

Instruction Manual

for the

SADPmini Logger Software



Index

1	SADPMINI SPECIFICATION.....	1
2	PC SPECIFICATION.....	1
3	SOFTWARE INSTALLATION	1
3.1	AUTOMATIC INSTALLATION	1
3.2	MANUAL INSTALLATION	1
4	UN-INSTALLATION OF SOFTWARE.....	1
5	INTRODUCTION.....	2
6	OPERATION.....	2
6.1	STARTUP	2
6.1.1	Splash Screen.....	2
6.1.2	Connection Pop-up Screen.....	2
6.1.3	Main Screen	3
6.2	EXPORT DATA	4
6.2.1	Export DATA Pop-up Screen	4
6.2.2	Downloading Screen.....	4
6.3	EXTERNAL LOG.....	5
6.3.1	External LOG Pop-up Screen	5
6.3.2	External Logging Screen	6
6.4	REVIEW DATA	8
6.4.1	The Review Stored Data screen.....	8
6.5	DISABLING POP-UPS	10
7	CABLES AND INTERFACES	10
7.1	RS232 TO RS485 INTERFACE.....	10
7.2	USB TO RS485 INTERFACE.....	10

1 SADPmini Specification

SADPmini Logger Software Version 2.8 requires that the SADPmini being communicated with is running version 5.3 firmware or higher. If the SADPmini has a lower firmware version then obtain SADPmini Logger Software Version 1.32.

2 PC Specification.

The PC should be running Windows XP, Vista or 7. The PC screen resolution should be set to a minimum of 1024 x 768 pixels.

3 Software Installation

If applicable, make sure you are logged on with sufficient privileges to install new software.

3.1 Automatic Installation

1. Place the CD into the CD drive.
2. The CD will automatically start the Installation Wizard
3. Follow the on-screen instructions
4. **Use the default installation directory of c:\sadpmini 2.8**

3.2 Manual Installation

If the Software does not automatically install follow the sequence below: -

1. Place the CD into the CD drive.
2. Press the 'Start' button and select the 'Run' option.
3. Press the 'Browse' button.
4. Select the CD from the 'Look in' pull down menu.
5. Highlight the Setup.exe file and press the 'Open' button.
6. Press the 'OK' button.
7. The Installation wizard will then take you through the installation process.
8. Follow the on screen instructions
9. **Use the default installation directory of c:\sadpmini 2.8**

Files installed in the SADPmini folder: -

- data\lvtime.dll
- alpha.ico
- SADPmini.exe
- SADPmini.ini
- SADPmini.set

4 Un-installation of Software

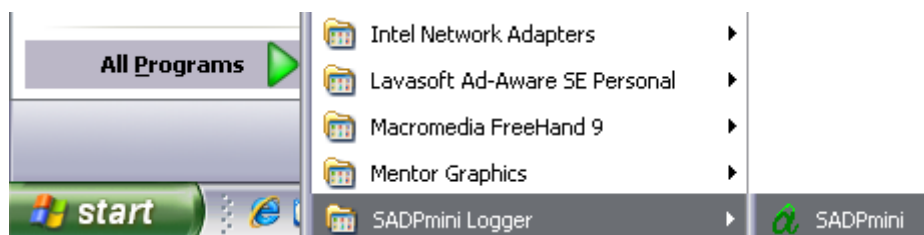
To un-install the SADPmini Logger program simply follow the instructions in 'Section 3 Software Installation' from 1 to 4. The installation wizard will automatically remove the software from the PC.

5 Introduction

The SADPmini Logger software consists of three parts, a downloading facility called 'Export DATA', a remote logging facility called 'External LOG' and a stored data reviewing facility called 'Review DATA'. See the associated sections in this manual for more details on each operation.

6 Operation

6.1 Startup



Start the program by pressing the 'Start' button, selecting 'All Programs' followed by 'SADPmini Logger' and 'SADPmini'. The splash screen shown in 6.1.1 below will appear as the program starts.



6.1.1 Splash Screen

Click on the OK button to continue to the next screen.

The radio button in the bottom left hand corner will be explained in the section 'Disabling Pop-ups'.

6.1.2 Connection Pop-up Screen

Using either the USB to RS485 Interface or the Serial to RS485 Interface connect the SADPmini to the logging PC or laptop computer, using the associated cables, (See the SADPmini user manual for more details).

Click on the OK button to continue to the next screen.

Note: See the section on 'Disabling Pop-ups' to prevent this screen appearing.



6.1.3 Main Screen

It should be noted that before the SADPmini and the PC logging software can communicate the SADPmini needs to be put into communication mode – to achieve this activate the ‘Logging Menu’ on the SADPmini and select the ‘PC Comms’ function. (See the SADPmini user manual).



Com Port: selector (default setting 1)

This control sets the ‘COM Port’ on the logging computer used to talk to the SADPmini.

Note: Refer to your Windows Manual for information on how to find out your COM port setting.

SADPmini Unit Address: selector (default setting 1)

This control sets the address that the SADPmini will respond to (see section 9.2.9 ‘Unit Address’ in the ‘Model SADPmini Instruction Manual’ for instructions on how to set the SADPmini address).

Note: Failure to set these variables correctly will result in the communications between the SADPmini and the logging computer failing.

EXIT button:

This control aborts the PC software.

Export DATA button:

See Section 6.2.

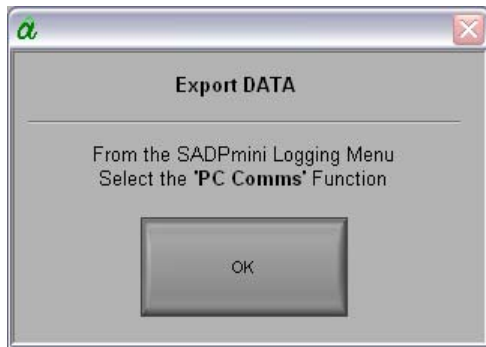
External LOG button:

See Section 6.3.

Review DATA button:

See Section 6.4.

6.2 Export DATA

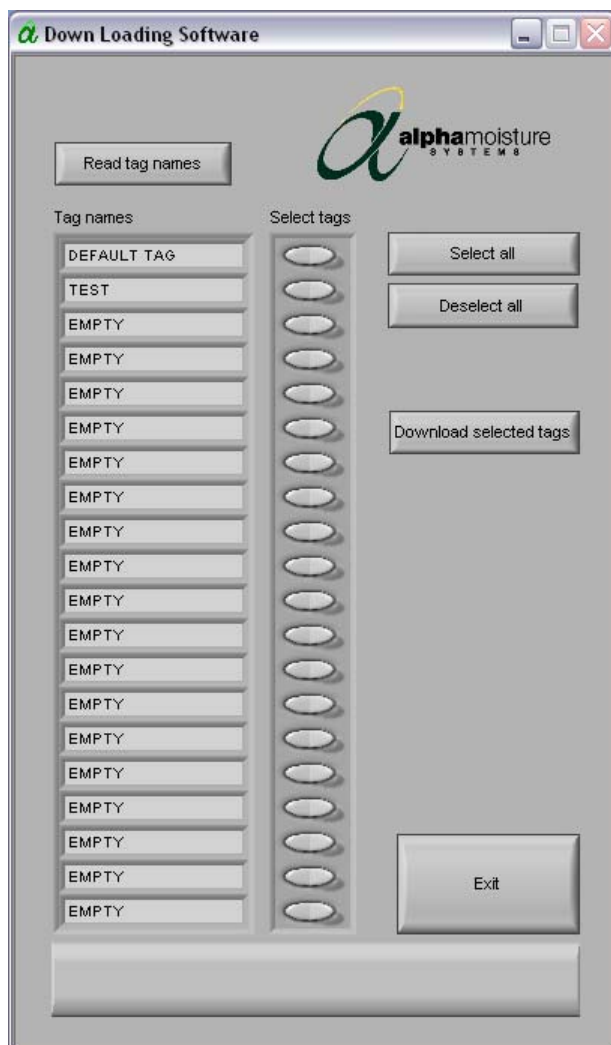


6.2.1 Export DATA Pop-up Screen

Activate the 'Logging Menu' on the SADPmini and select the 'PC Comms' function.

Click the 'OK' button to continue to the next screen.

Note: See the section on 'Disabling Pop-ups' to prevent this screen appearing.



6.2.2 Downloading Screen

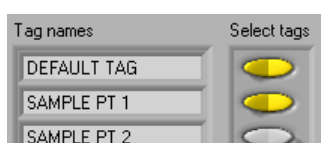
The Downloading screen will automatically communicate with the attached SADPmini, and list all the TAGs.

Note: If a window appears reporting a Timeout or Error Message and all buttons are grayed out except the 'Exit' button, the SADPmini logger software is not communicating with the SADPmini. Press the 'Exit' to return to the 'Main Screen'. Ensure that the correct cables are connected, and that the correct 'Address' and 'Com Port' settings have been set and that the 'PC Comms' function has been activated on the SADPmini.

There are 20 TAG locations available in each SADPmini. Each location can store up to 20 separate blocks of data. Downloading a TAG automatically downloads the data blocks.

Each TAG is saved to an automatically created and named .MST file in the SADPmini directory. The filename created is based upon the TAG name. If multiple files are to be saved using the same TAG name the software automatically appends a '_#' discriminator to the end of the filename e.g. 'DEFAULT TAG_2.MST'.

These files can easily be imported into Microsoft Excel for data manipulation, as the format used in creating the files is CSV (Comma Separated Values).



Select tags rocker switches: (default OFF)

These controls are used to select the data that is to be downloaded. When the switch is Yellow, the associated TAG data will be downloaded when the 'Download selected tags' button is pressed.

Select all and De-select all buttons:

These controls are used to turn all the rockers switches to ON or OFF.

Read tag names button:

NOT USED IN NORMAL OPERATION

Used to re-read the SADPmini TAGs. This is useful for re-establishing the communications link between the computer and the SADPmini when the SADPmini has been used for other functions, which will lose the link.

Exit button:

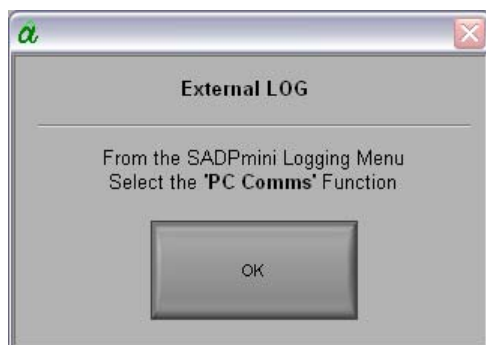
This control returns the PC software to the Main screen (See section 6.1.3)

Download selected tags button:

This control starts the process of downloading the required TAGs. After the button is pressed, an indicator appears that calculates the number of samples that are to be downloaded. A progress bar then appears that indicates the progress of the download. Once all the data has been downloaded to the PC returns to the Main Screen 6.1.3.



6.3 External LOG



6.3.1 External LOG Pop-up Screen

Activate the 'Logging Menu' on the SADPmini and select the 'PC Comms' function.

Click the 'OK' button to continue to the next screen.

Note: See the section on 'Disabling Pop-ups' to prevent this screen appearing.

6.3.2 External Logging Screen



The External Logging screen will automatically communicate with the attached SADPmini and update the graphical and digital displays. The graph has auto-scaling axis. The Y-axis shows the moisture level in the current engineering units of the SADPmini. The X-axis shows the number of readings and the interval between each reading. Approximately 8000 readings can be displayed on the graph before the display automatically scrolls

Note: If a window appears reporting a Timeout or Error Message and all buttons are grayed out except the 'Exit' button, the SADPmini logger software is not communicating with the SADPmini. Press the 'Exit' to return to the 'Main Screen'. Ensure that the correct cables are connected, that the correct 'Address' and 'Com Port' settings have been set and that the 'PC Comms' function has been activated on the SADPmini.

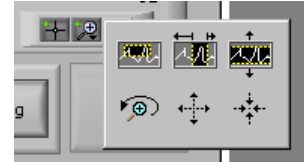
Note: If the Logging LED flashes Green for an instant before turning back to Red when the 'Logging' button is pressed, the 'Com Port' selected is incorrect. Press the 'Exit' button and return to the 'Main Screen'.

Graph Manipulation Palette:



The graph manipulation palette enables the graphical display to be manipulated in various ways. Before using this palette, it is recommended that the logging of new data be stopped because new data points cause the graphical display to refresh in the default form, over writing any manipulation that had been performed.

The top three Icons enable specific areas of the graphical display to be enlarged. The area to be enlarged is selected by depressing the left mouse button and dragging the cursor. The graphical display is then redrawn. The Bottom left Icon performs an undo function. The other 2 Icons are zoom in and out functions activated by pressing the left mouse button.



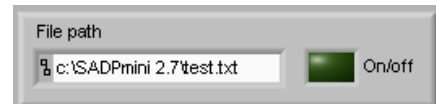
Digital Display indicator:

This displays the last data point value in and the associated engineering units.

Interval/min selector: (default 0.1)

This control sets the delay between subsequent data points in minutes. The value increments and decrements in 0.1-minute steps. It is also possible to set the delay period by highlighting the current value and typing a replacement value.

File Path controller: (default c:\SADPmini 2.7\test.txt)



The file logging function is selected by clicking on the LED. The LED turns light green and the data points are automatically written to the default file 'test.txt'. Clicking on the LED again turns the LED dark green and stops writing data to file.

Note: Data points are always appended to this file. The file is never overwritten. It is therefore recommended that if this facility is required that the file is deleted before starting to log, as if the file does not exist the program will create it.

The test.txt file can easily be imported into Microsoft Excel for data manipulation, as the format used in creating the file is CSV.

Logging button:

Used to start and stop the logging of data points from the SADPmini. The LED turns green for logging and red for not logging.

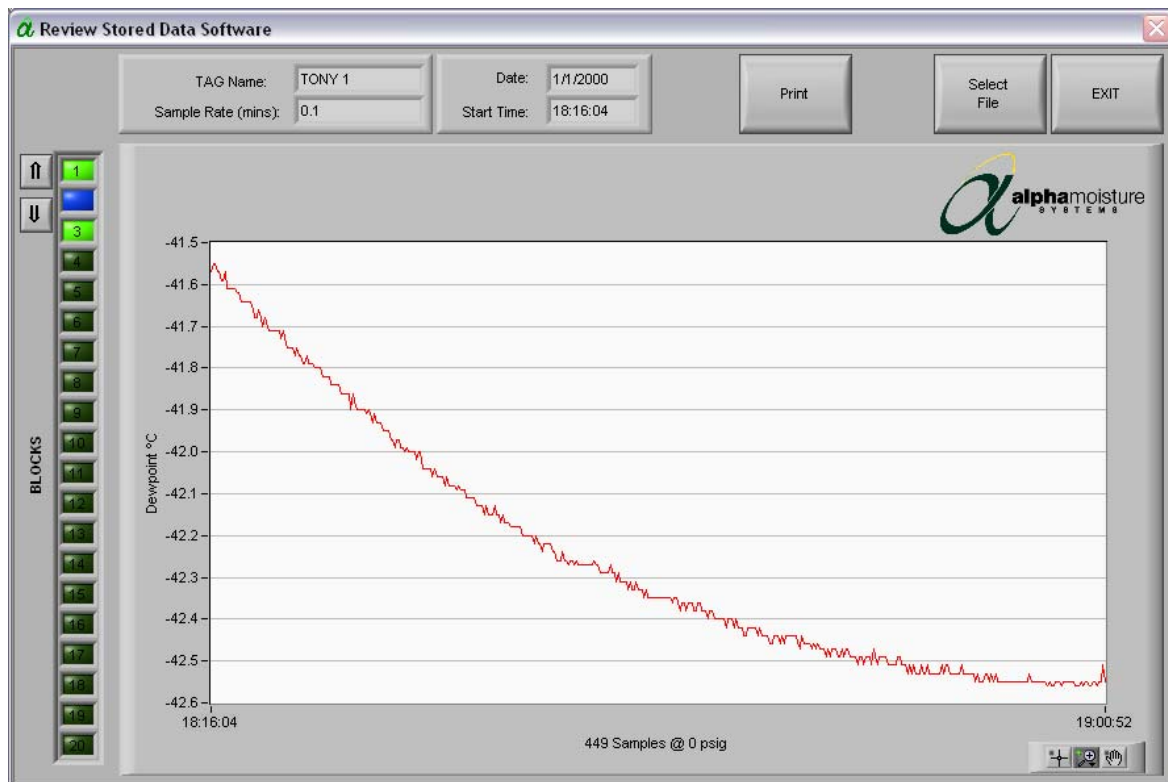
Note: It is advisable to stop logging before performing graph manipulation. It is also required to stop logging before exiting the External Logging function.

Exit button:

This control returns the PC software to the Main screen (See section 6.1.3)

Note: This button is greyed out when logging is in progress. Stop logging to activate the 'Exit' button.

6.4 Review DATA



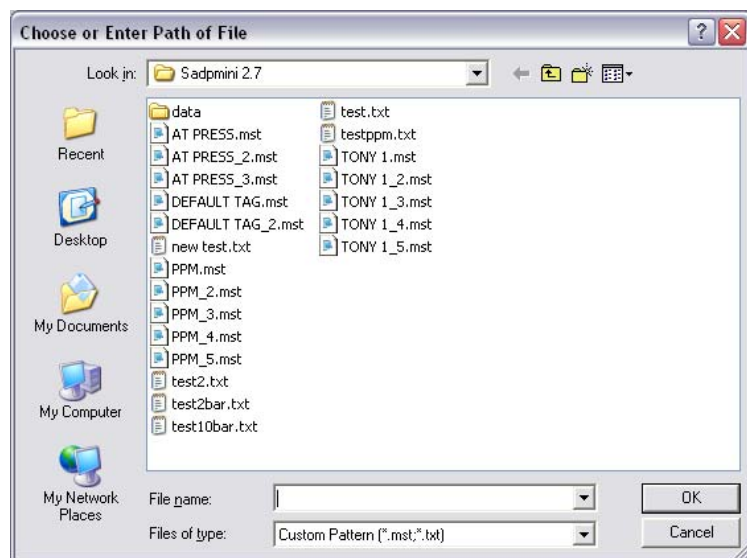
6.4.1 The Review Stored Data screen

The Review Stored Data function enables downloaded data from the SADPmini (“*.mst”) or files logged to the PC in real time (“*.txt”) to be viewed quickly without the need to manipulate the data in Microsoft Excel. This function is not intended as a replacement for data manipulation merely as an aid to analysis.

File selector panel:

This panel appears when the function is first run and whenever the ‘Select File’ button is pressed. It operates in the same way as a normal File selector panel within ‘Microsoft Windows’.

Select the file to review by left clicking on the required file and then pressing the ‘OK’ button.



The Review Stored Data function will open the specified file and plot the first block of data within that file to the graphical display. The graph has auto-scaling axis. The Y-axis shows the moisture level in the selected engineering units. The X-axis shows the number of

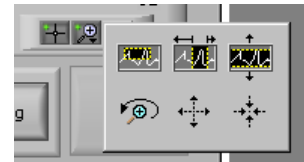
readings, pressure, when the readings were taken and the start and finish time of the test. A maximum of 12800 readings can be displayed on the graph. **It is therefore strongly recommended that the logging time interval is chosen so that during the data logging process the number of readings stored does not exceed 12800.**

Graph Manipulation Palette:



The graph manipulation palette enables the graphical display to be manipulated in various ways.

The top three Icons enable specific areas of the graphical display to be enlarged. The area to be enlarged is selected by depressing the left mouse button and dragging the cursor. The graphical display is then redrawn. The Bottom left Icon performs an undo function. The other 2 Icons are zoom in and out functions activated by pressing the left mouse button.



Digital Display indicators:

The following information is read from the selected file and displayed in four digital display indicators, located above the graphical display

- TAG Name:
- Sample Rate (mins):
- Date:
- Start Time:

Print button:

This button will automatically send a printout to the computers default printer. There is no printer setup function so the printout will conform to the printers default settings. i.e. the printout will be in portrait if that is the default setting of the printer.

Select File button:

This button brings up the File Selector panel.

Block Indicator LEDs:

These controls are disabled and grayed out when reviewing a real time file

There are 20 LEDs, one for each permissible block of data that can be stored under each TAG name on the SADPmini. When a file is opened, the LEDs indicate as follows:

- Light Green – Block containing data.
- Blue – Block containing data and currently selected for graphing.
- Dark Green – Block containing no data.



Block Selector buttons:



The 2 small buttons located at the top left hand side of the Block Indicators are used to select the data block to be graphed. The blue LED signifies the data block that is currently plotted. The block selector buttons move the selected block up or down.

Note: Only blocks containing data can be selected for graphing

Exit button:

This control returns the PC software to the Main screen (See section 6.1.3)

6.5 Disabling Pop-ups

To disable the information pop-up screens simply select the 'Disable Pop-up' radio button on the Splash screen (see section 6.1.1). This will prevent the information panels from appearing. It is recommended that this process is not used until the user is completely confident with the physical operation of the SADPmini logging software and the Model SADPmini.

The screens disabled are:

- Initial Pop-up Screen (see section 6.1.2).
- Export DATA Pop-up Screen (see section 6.2.1).
- External LOG Pop-up Screen (see section 6.3.1).

The pop-up screens can be re-enabled at any time by de-selecting the radio button on the splash screen (see section 6.1.1).

7 Cables and Interfaces

There are 2 types of interface that can be used with the SADPmini and SADPmini Logging software.

7.1 RS232 to RS485 Interface

The Interface unit INT007 has two 9-way 'D' type connectors. The connector marked with a 'B' connects to a PC or Laptop serial Port using a 2.0m serial cable (Part No: CAB029). The connector marked with a 'S' connects to the SADPmini using a 1m special cable (Part No: CAB032).

7.2 USB to RS485 Interface

The Interface unit INT008 has a 9-way 'D' type connector and a USB connector. The USB connects to a PC or Laptop USB Port using a 1.8m USB cable (Part No: CAB031). The 'D' type connects to the SADPmini using a 1m special cable (Part No: CAB033).

Note: The drivers for the USB Interface are supplied on the included CD.