

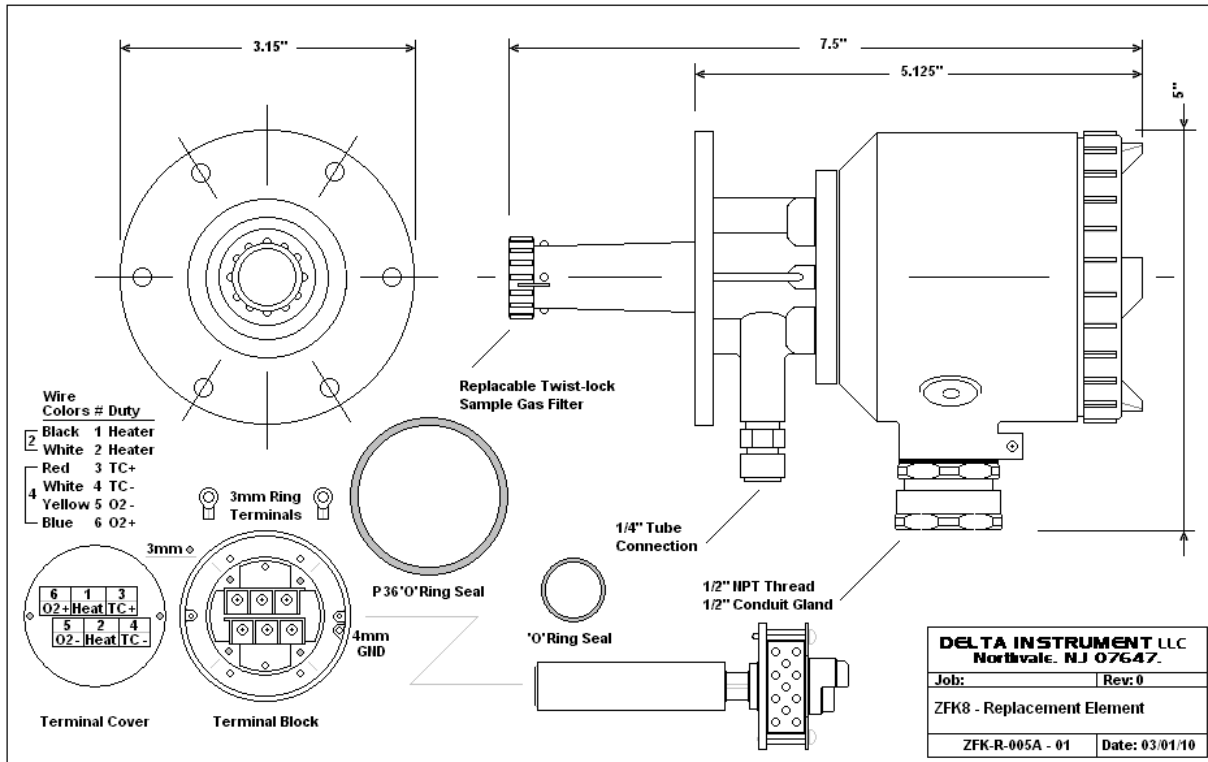


### Tools Required

- #1 Phillips screwdriver
- Torque screwdriver

### Parts Recommended

- 1 . Sample Gas Filter (not supplied with element kit.)
- 1 . P36  $\mu$ Qring Seal (not supplied with element kit.)



Turn off the ZKM line power and remove the ZFK8 Detector from the probe . first allowing it to cool before handling.

Remove screw cover, the inner terminal cover screws (2x M3), loosen the 6, M3 terminal screws and remove both the 2 & 4 conductor cables. Remove the 4, M3 internal element retention screws and withdraw and replace with the new sensor element using the new  $\mu$ Qring seal and 4 screws supplied and tighten to 0.7N-m. Using the diagram, wire the 6 color coded wires and replace terminal cover and the outer blue threaded cover.

Install the ZFK8 Detector to the probe flange using six M5 bolts ensuring that the P36  $\mu$ Qring seal is correctly seated then install the calibration gas connection.

Check all connecting cable and tubing connections before applying line power.

Perform zero and span calibration following procedures outlined in user's manual.